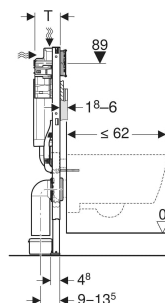
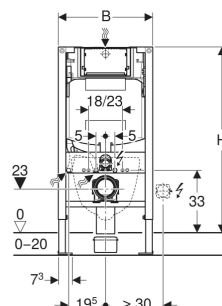


Geberit Duofix element for wall-hung WC, 98 cm, with Sigma concealed cistern 12 cm



APPLICATION PURPOSES

- For drywall construction
- For installation in part-height Geberit Duofix system walls
- For installation in part-height prewall installations
- For wall-hung WCs with connection dimensions in accordance with EN 33:2011
- For wall-hung WCs with projection up to 62 cm
- For floor constructions 0–20 cm
- Not suitable for Sigma70 flush plates
- Not suitable for Sigma80 flush plates

CHARACTERISTICS

- Statically self-supporting frame, protected against corrosion with powder coating
- Frame prepared for support brackets for WC ceramic appliances with small contact surfaces
- Galvanized feet
- Feet adjustable 0–20 cm
- Non-slip leg supports
- Rotatable foot plates
- Foot plate depth suitable for installation in U-profiles UW 50 and UW75 and Geberit Duofix system rails
- Connection bend can be mounted without tools at different depths, adjustable range 45 mm
- Fastening for connection bend, sound-absorbing

- Concealed cistern with front actuation
- Concealed cistern, fully insulated against condensation
- Cistern fulfils standard requirements in accordance with EN 14055, Class II
- Immediate post flush possible with factory setting
- Flush bend fitted
- Cistern rotatable by 180° for access from service room
- Tool-free installation and maintenance work on concealed cistern
- Water supply connection on the rear centre
- Protection cover box for service opening protects against moisture and dirt
- Protection box for service opening can be cut to length
- With conduit pipe for feed pipe for Geberit AquaClean shower toilets and for connection cable
- Fastening option for electrical connection

TECHNICAL DATA

Flow pressure	0.1–10 bar
Operating temperature, water max.	25 °C
Flush volume, factory setting	5.8 / 3 l
Flush volume small, adjustment range	2–4 l
Height-adjustable	No

SCOPE OF DELIVERY

- Water supply connection R 1/2", compatible with MasterFix and MeplaFix, with integrated angle stop valve and hand wheel
- Protection box for service opening
- 2 wall anchors
- Connection set for WC, Ø 90 mm
- Connection bend 90° made of PE-HD, Ø 90 mm
- Adaptor socket made of PE-HD, Ø 90 / 110 mm
- 2 protection plugs
- 2 threaded rods M12
- Fastening material

ACCESSORIES

- Geberit Power & Connect box
- Geberit set of Power & Connect box and power supply unit for element for wall-hung WC
- Geberit set of support brackets for WC ceramic appliances with small contact surfaces
- Geberit Duofix set of wall anchors for single installation
- Geberit Duofix set of wall anchors for single and system installation
- Geberit Duofix set of foot extensions for floor construction 20–40 cm
- Geberit concealed outlet for drywall and solid wall construction

Art. no.	B cm	H cm	T cm	
111.911.00.3	50	98	12	