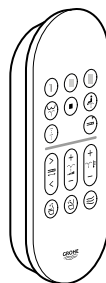
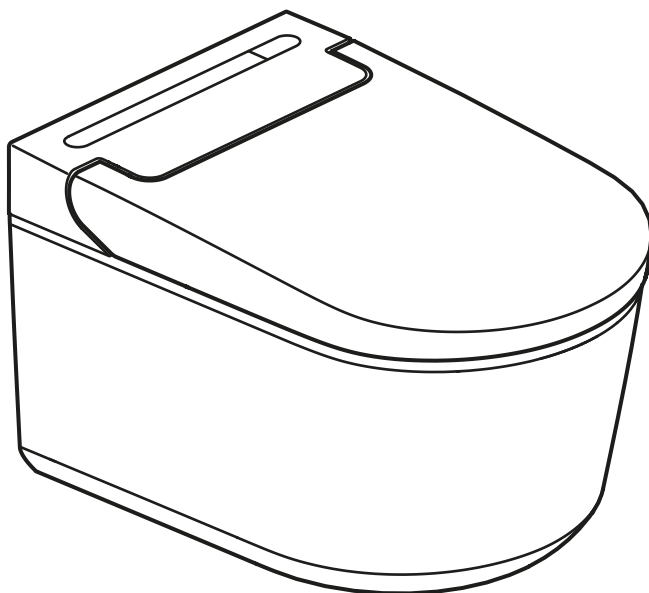


Sensia PRO
DESIGN + ENGINEERING
GROHE GERMANY

97.0101.031/ÄM 256593/08.23

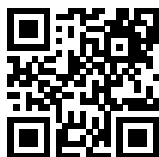
<http://www.grohe.com>



MAINTENANCE GUIDE

SENSIA PRO

This Maintenance Guide does not replace the User Manual.
Please read the User Manual and observe the warnings and safety instructions.



Scan for more language options

PART OF **LIXIL**

GROHE SENSIA PRO

MAINTENANCE GUIDE






GENERAL INFORMATION



To maximize the effectiveness of AQUA CERAMIC, do not use the following cleaners and tools:

- Strong alkali/acidic cleaners
- Abrasive cleaners
- Water- or stain-resistant cleaners, or surface coating agents
- Cleaning tools that damage the material surface, such as metallic or abrasive brushes

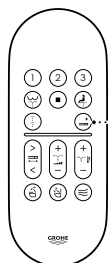
For detailed cleaning instructions and recommended cleaning tools, please scan the QR code on the last page of this guide.

FIRST STEP	
<p>TURN THE OPEN/CLOSE FUNCTION OFF.</p>  <p>Press [Stop] and [Open/close toilet seat lid] simultaneously for 2 seconds.</p>	<p>TURN THE AUTO-FLUSH FUNCTION OFF*</p> <p>* Only if the auto-flush kit is installed.</p>  <p>Press [Front washing] and [Adjust water temperature -] simultaneously for 2 seconds.</p>
	<p>TURN THE AUTO PRE-FLUSH FUNCTION OFF*</p> <p>* Only if the auto-flush kit is installed.</p>  <p>Press [Front washing] and [Adjust water temperature -] simultaneously for 2 seconds.</p>
CLEANING	
<p>TOILET SEAT / LID / COVER / REMOTE CONTROL</p>  <p>Use a soft, damp cloth to wipe the surface of the toilet seat, lid, cover and remote control. Note: Be sure to use a neutral cleaning product.</p>	<p>BOWL</p>  <p>Clean the bowl with (warm) water using a soft brush or a sponge soaked in a neutral cleaning product. The lid can also be removed for cleaning purposes (please scan QR code)</p>

CLEANING THE NOZZLES

AUTOMATICALLY

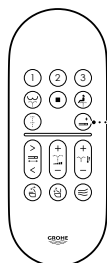
To clean the nozzle while using the toilet (sitting on the seat), follow the procedure below using the remote control.



Press the [Nozzle self-cleaning] button.

MANUALLY

The nozzles can be extended for manual cleaning with a soft cloth while not using the toilet (not sitting on the seat). Please follow the procedure below using the remote control.

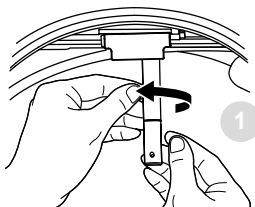


1. Press the [Nozzle self-cleaning] button.
2. Press the [Nozzle self-cleaning] button again: the current nozzle retracts and the other nozzle extends without spraying water.
3. Press the [Nozzle self-cleaning] button again; the nozzle retracts

CLEANING/REPLACING THE NOZZLE TIPS

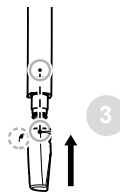
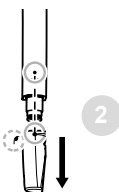
The nozzle tips can be removed for optimal cleaning and replacement.

Note: To extend and retract the nozzle, see "Cleaning the nozzles manually".

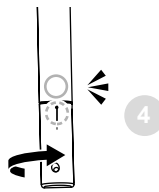


When the nozzle is extended, turn the nozzle tip to the left and pull it off.

* These are the instructions for replacing the rear-washing nozzle tip; turn the tip in the other direction when replacing the front-washing nozzle tip.



To put the nozzle tip back on, place it as shown in the picture onto the nozzle and turn it to the right.



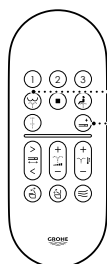
FINAL STEP

Follow the first step to turn the auto-flush/pre-flush function* to ON.

* Only if the auto-flush kit is installed.

DESCALING

1. Descaling is necessary when the GROHE LOGO is blinking.
2. It blinks after 3 months of use (period can be changed).
3. Please purchase the "Descaling Kit":
Product no. 1015469990.
4. For details such as specific methods of use, please refer to the User Manual online or the manual included with the descaling kit.



Press [Rear washing] and [Nozzle self-cleaning] simultaneously for 2 seconds.

GROHE SENSIA PRO MAINTENANCE GUIDE

ADDITIONAL INFORMATION

The Sensia Pro must be descaled on a regular basis.
For more detailed information, see the User Manual.

For all troubleshooting, more detailed descriptions, all cleaning steps,
or how to remove the lid for cleaning purposes, scan the QR code.



Scan to download the detailed User Manual

