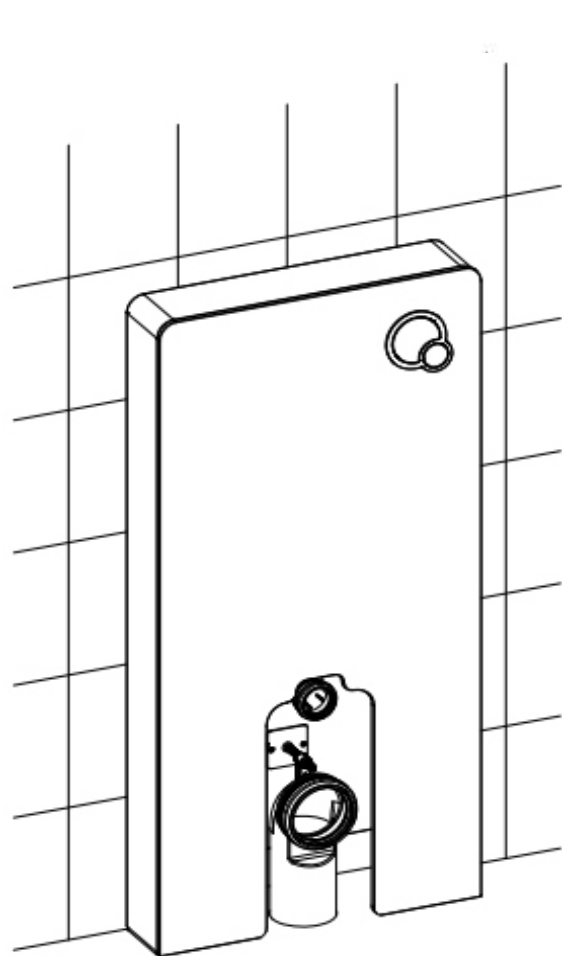


Aqua-Sigma

Dual flush cistern cabinet for floor standing WC

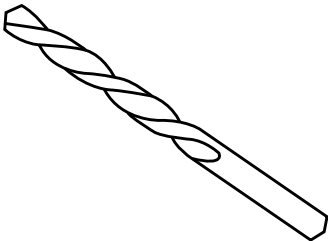
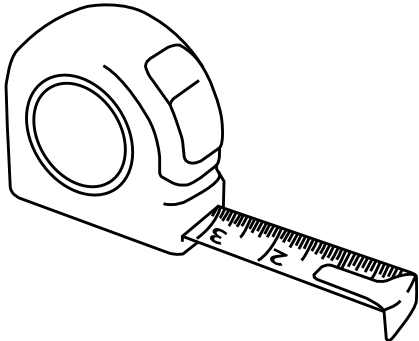
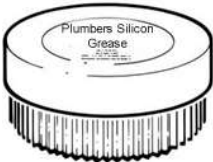
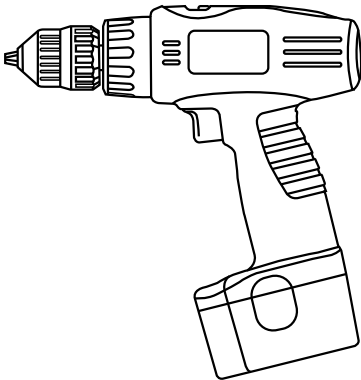
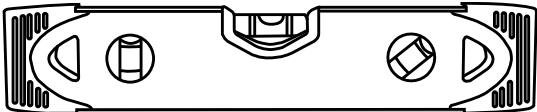
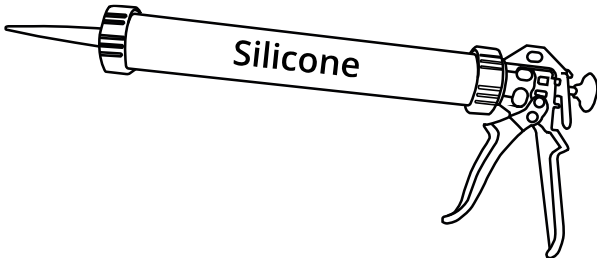
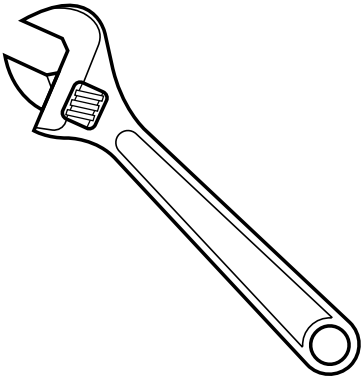
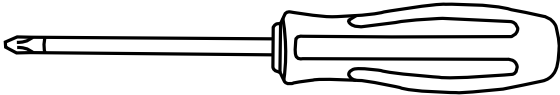


Installation Guide

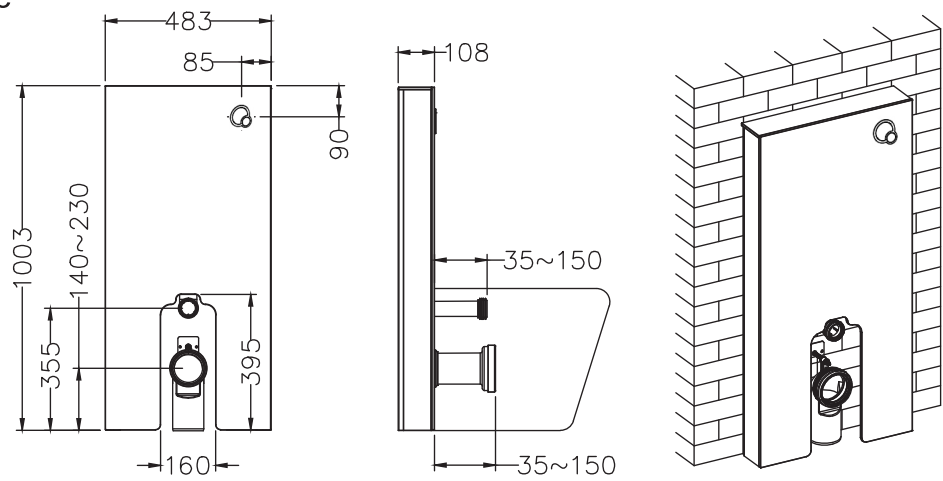
Models: DFS-8003-WHT / DFS-8003-BLK
















Installation

Tools required for installing:



1.Size



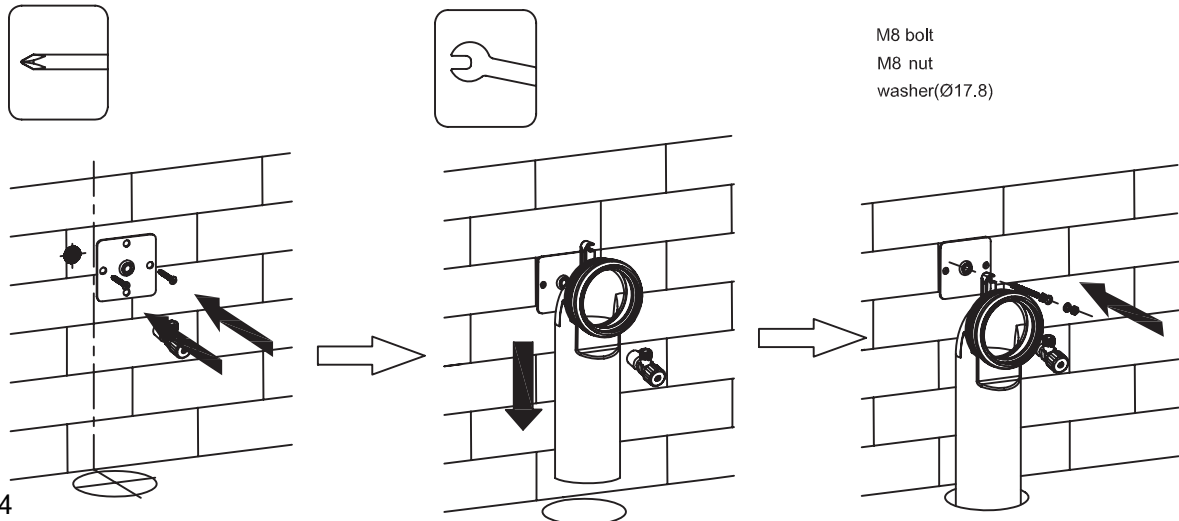
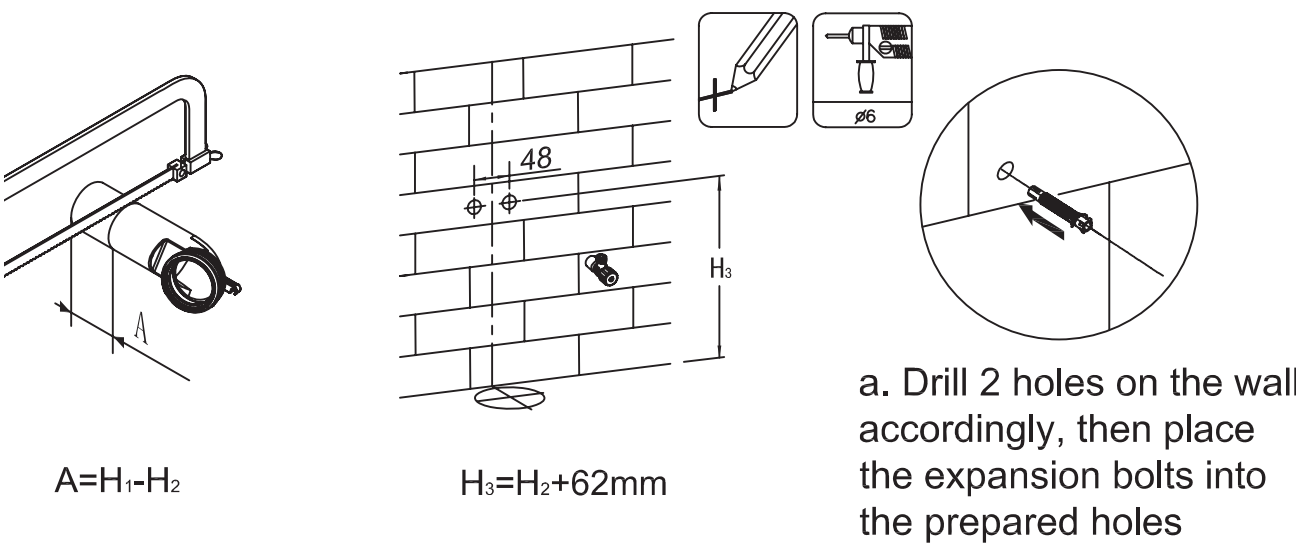
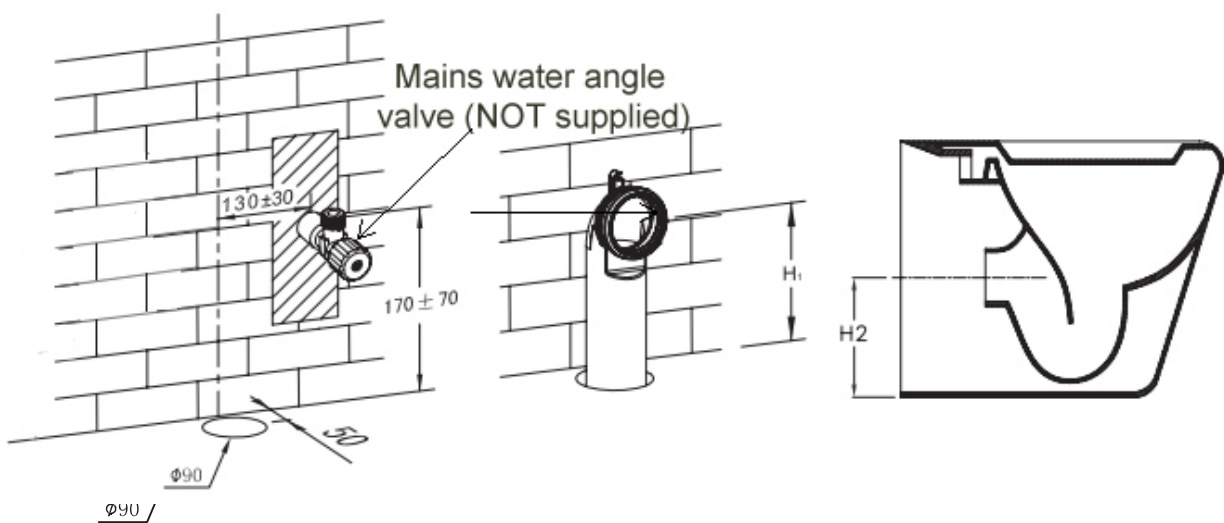
Item List	Items	Specification	Quantity	Item list	Items	Specifications	Quantity
	Angled waste pipe		1		rubber seal		1
	expansion nut (small)	Ø6x30	2		Straight waste pipe		1
	screw (small)	st4.2x35	2		rubber seal		2
	square plate		1		expansion nut (big)	Ø12.5x50	4
	M8 bolt		1		screw (big)	st6.8x67	4
	M8 nut		2		big washer	Ø22	4
	washer	Ø17.8	2		flush pipe		1
	rubber seal	Ø110	1		rubber seal on above pipe	Ø60	1
	full flush air hose	white	1		pipe adaptor (optional part during drainage bend installation)		1
	half flushing air hose	blue	1				

Technical Specification

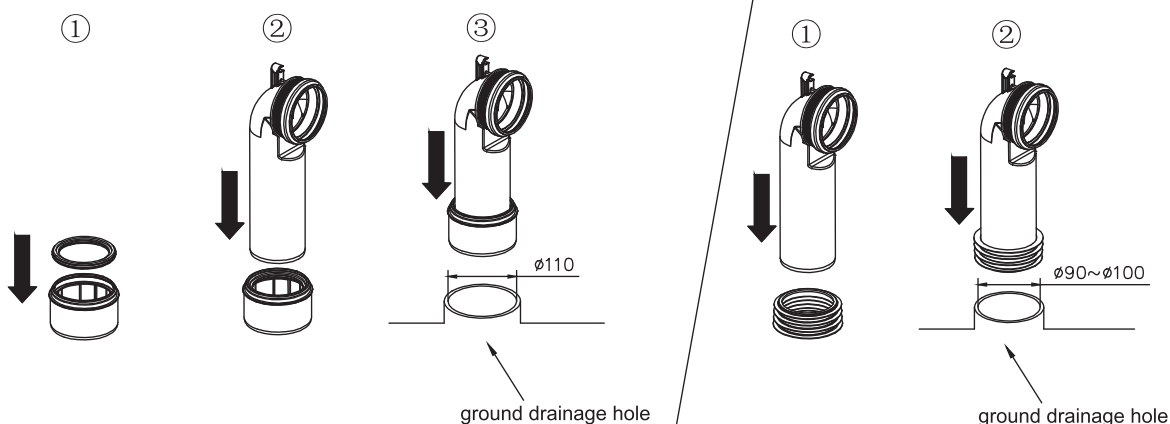
Dual flush cabinet cistern for floor standing WC

name	Dual flush cabinet cistern for floor standing WC	
model	DFS-8003-WHT	DFS-8003-BLK
Technical Specification	rated voltage	220V AC, 50HZ
	ambient temperature	3~40°C
	water supply pressure	0.07~0.75MPa
	water supply temperature	4~35°C
	waterproof rating	IPX4
	dimension	1003.5mm X 483mm X 108mm

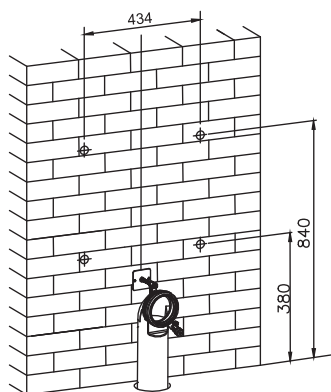
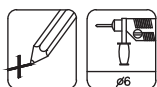
2. Waste pipe and mains angle valve installation



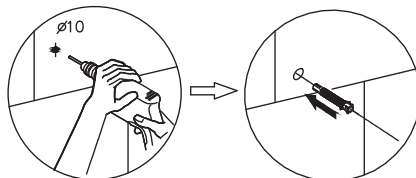
Choose right adaptor according to the ground drainage pipe size.



3. Cistern frame installation

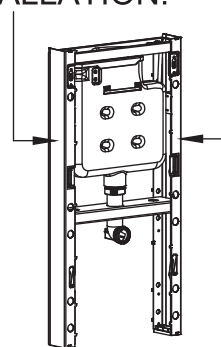


a. Drill 4 holes on the wall accordingly

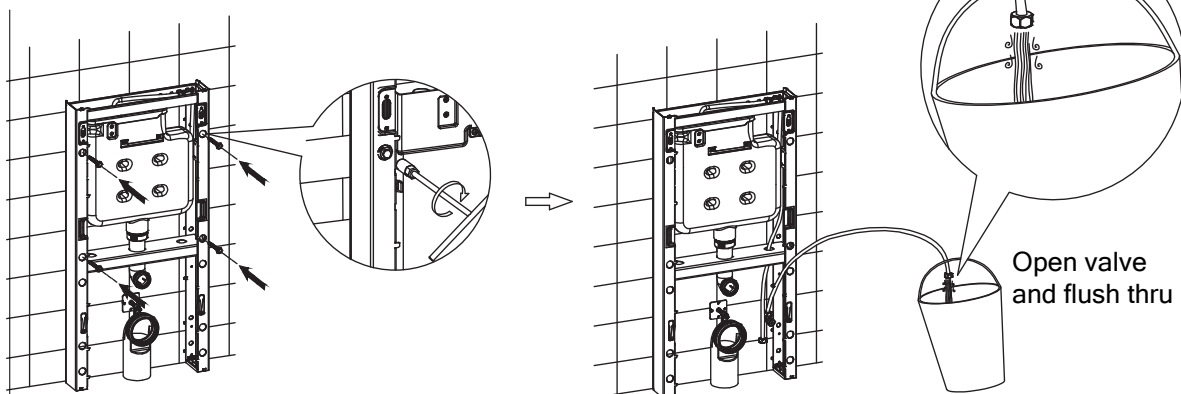


b. Place the expansion bolts into the prepared holes

c. This transparent film is for frame protection. It should be removed please do it BEFORE INSTALLATION.

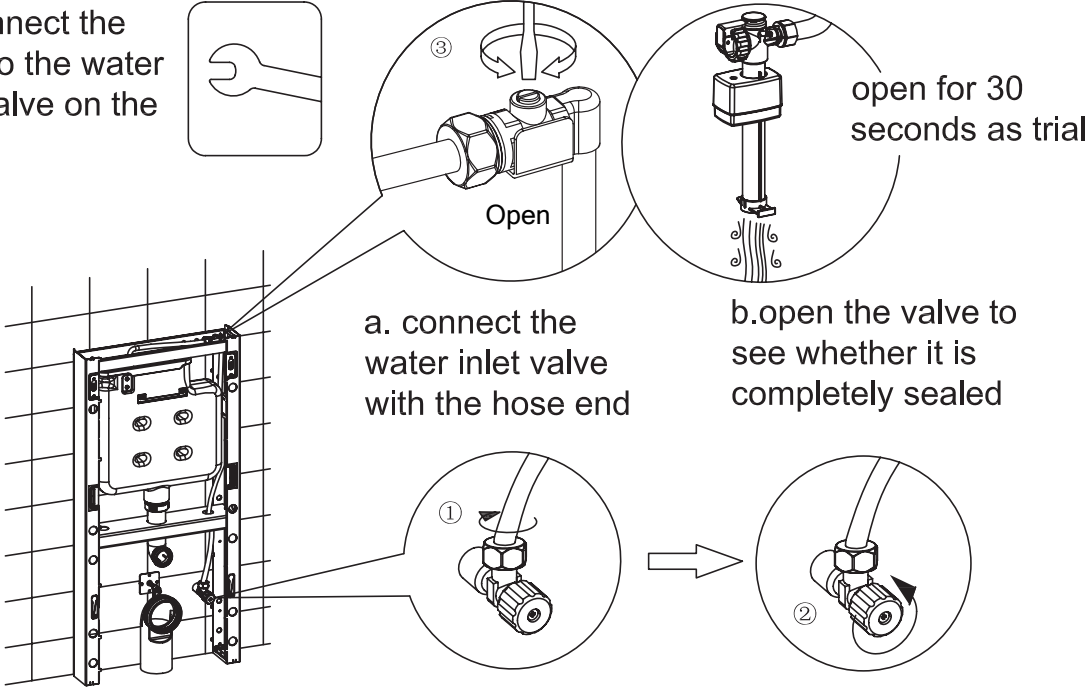


c. Fix the frame onto the wall by using the screw bolts supplied



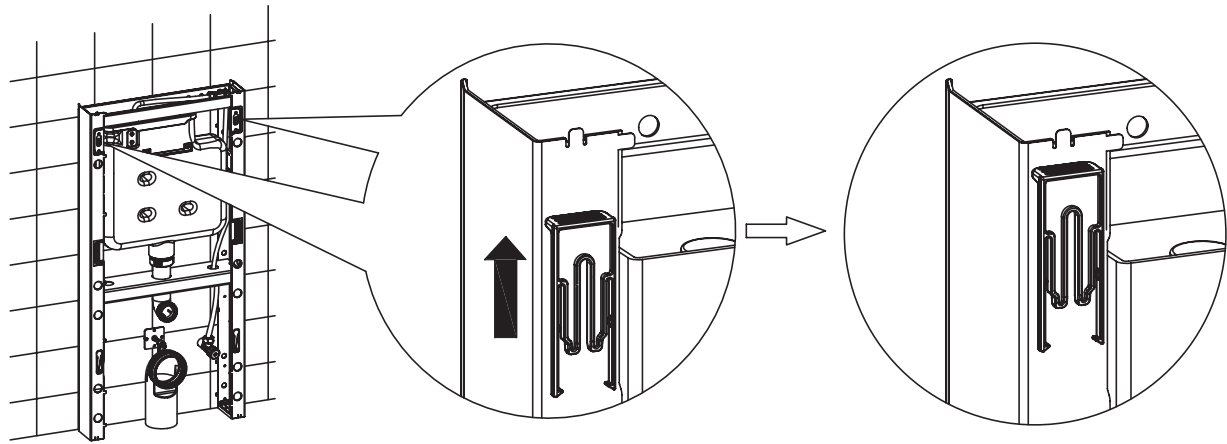
Open valve and flush thru

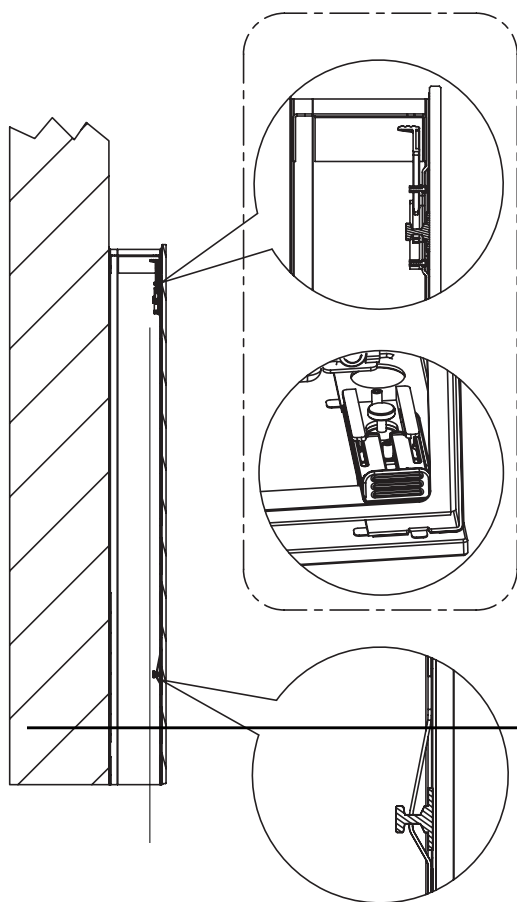
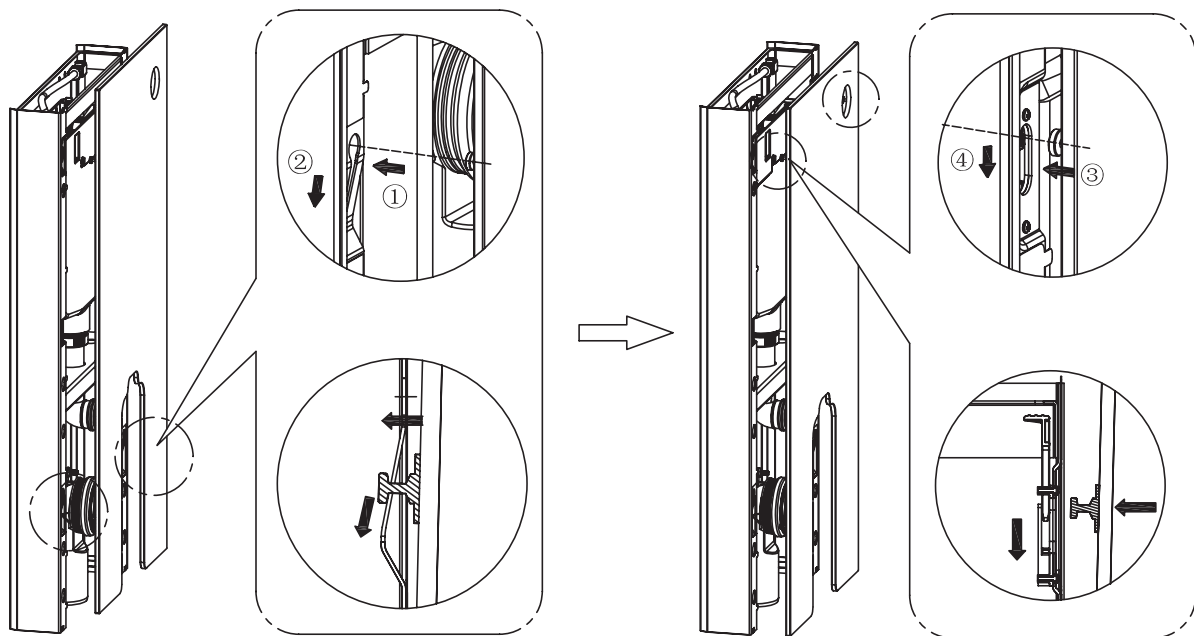
4. Connect the hose to the water inlet valve on the wall



5. Glass installation

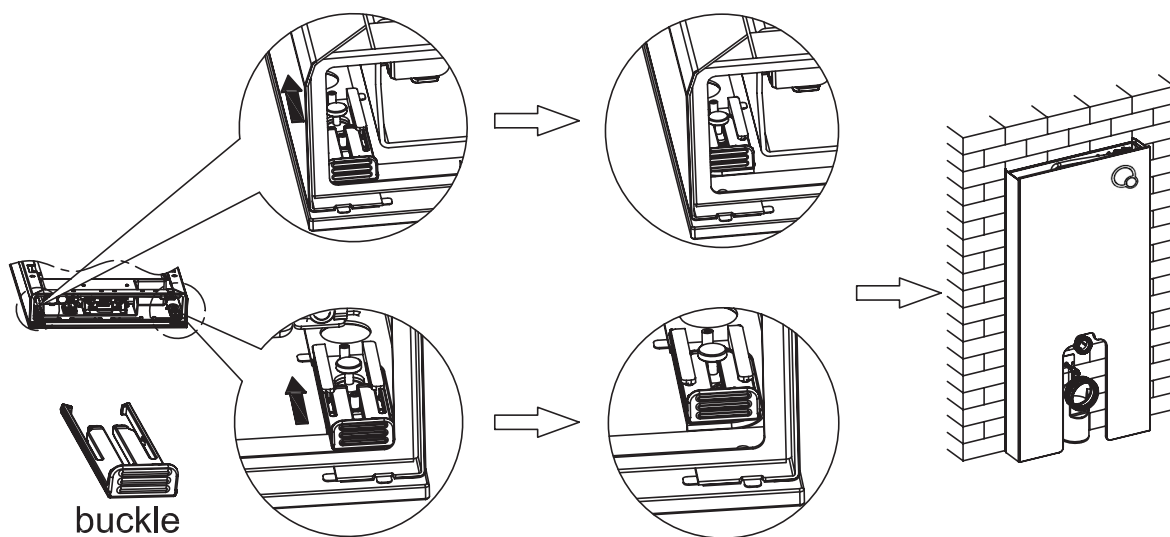
Pull up the glass support buckles until it clicks into the unlock position.





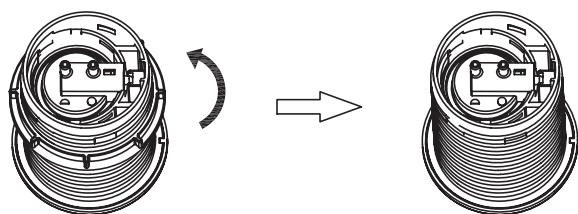
- ① Place the bottom hinge of the glass into the round hole located at the lower position of the frame.
- ② Slide the glass downwards until the top hinge of the glass is aligned with the support holes located on the top portion of the frame.
- ③ Push the top hinge into the upper supports hole and continue to slide the glass down until it is in position.

Lock the glass support buckle in place by pushing the buckles down.

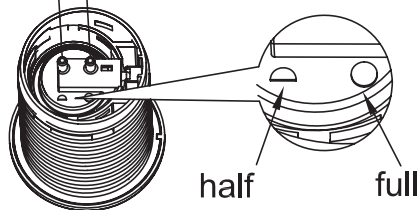


6. Pneumatic button hoses installation

a. unscrew the cap



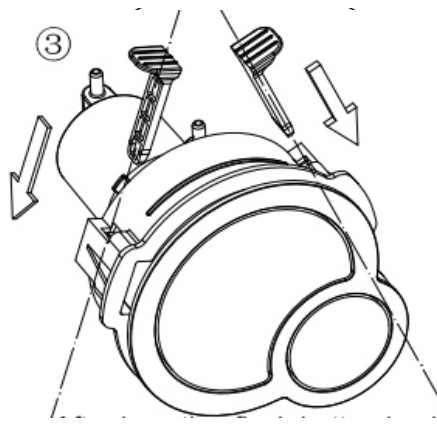
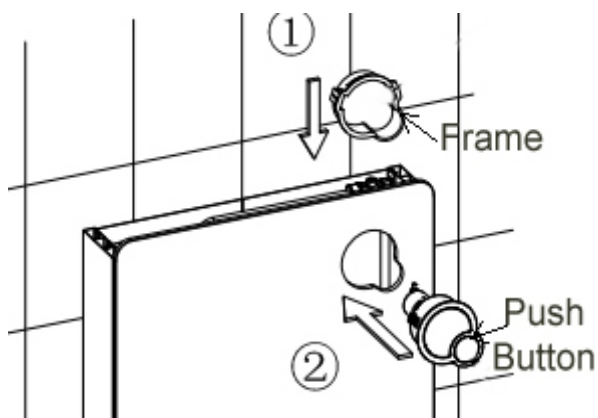
b. connect the hose



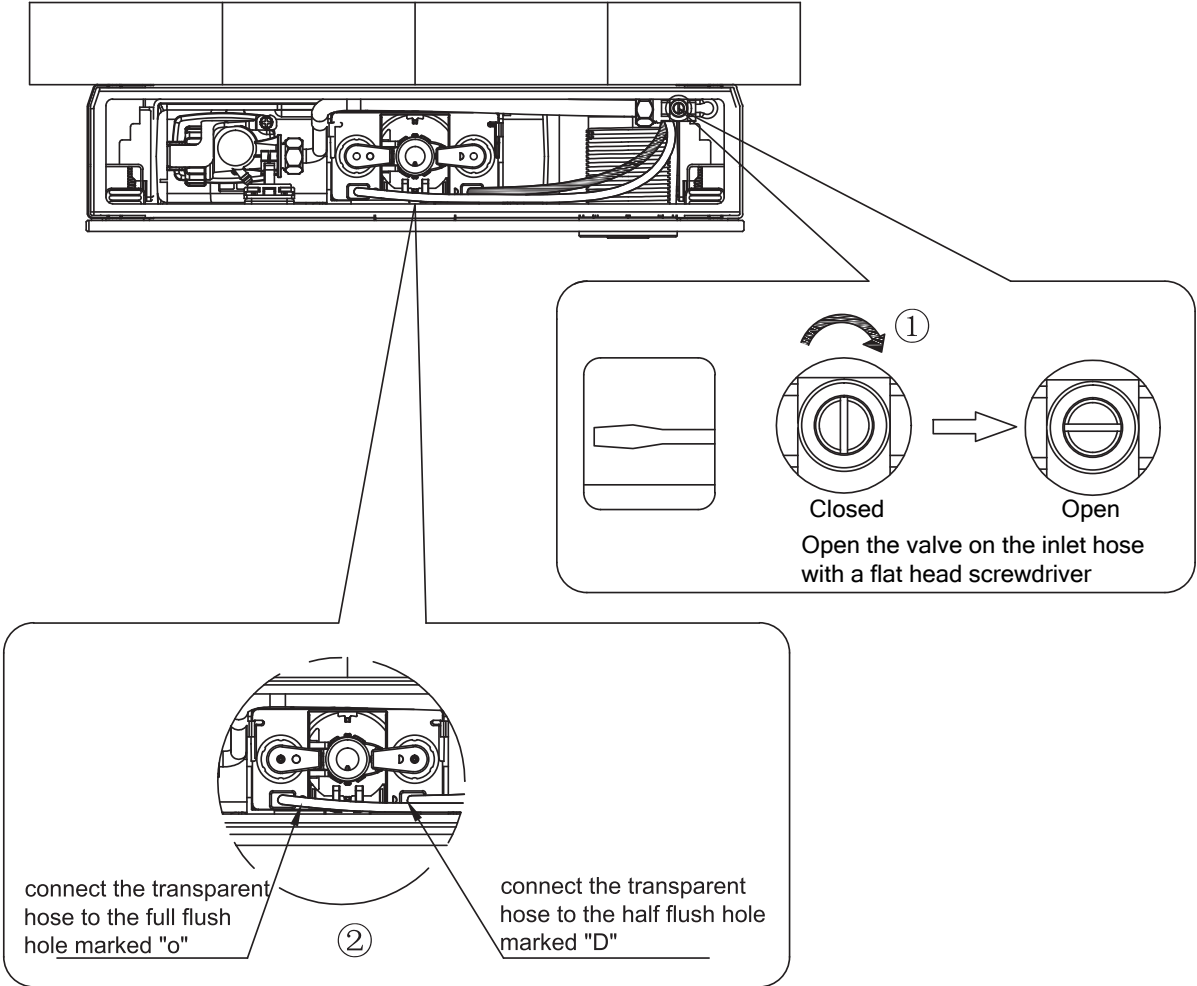
For full flush actuation, connect the transparent hose to the hole marked "o"
For half flush actuation, connect the blue hole marked "D"

7. Pneumatic button installation

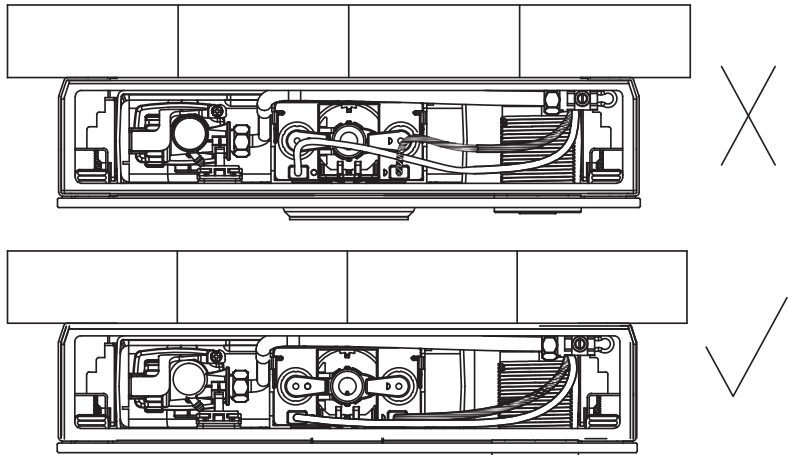
After inserting the push button in the glass insert the two plugs as illustrated



8. connect the outlet valve with the hose and open the angel valve:

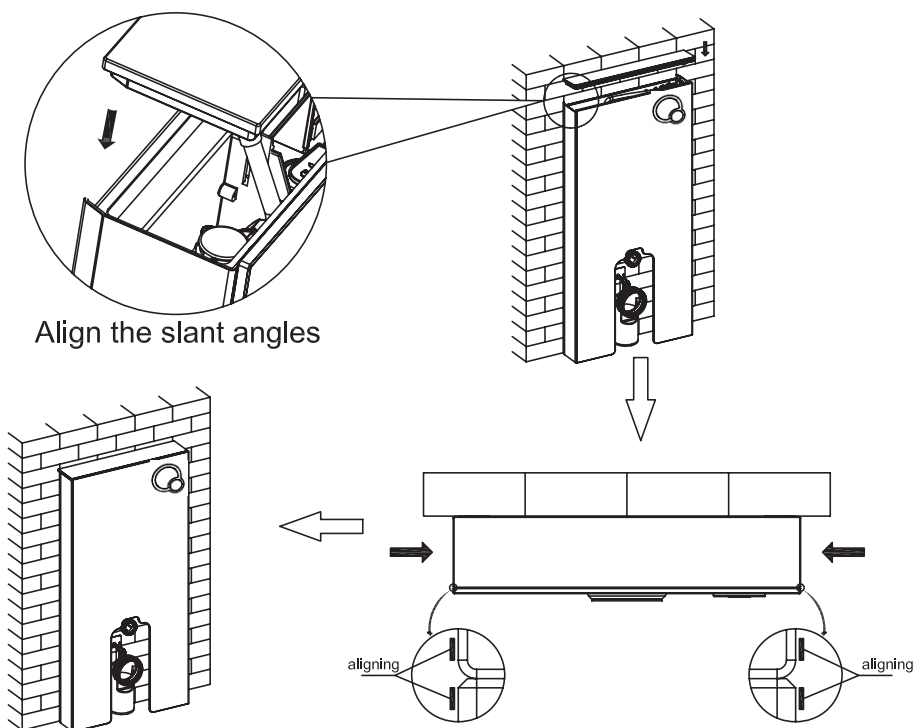


Make sure the air hoses are connected with push button correctly.

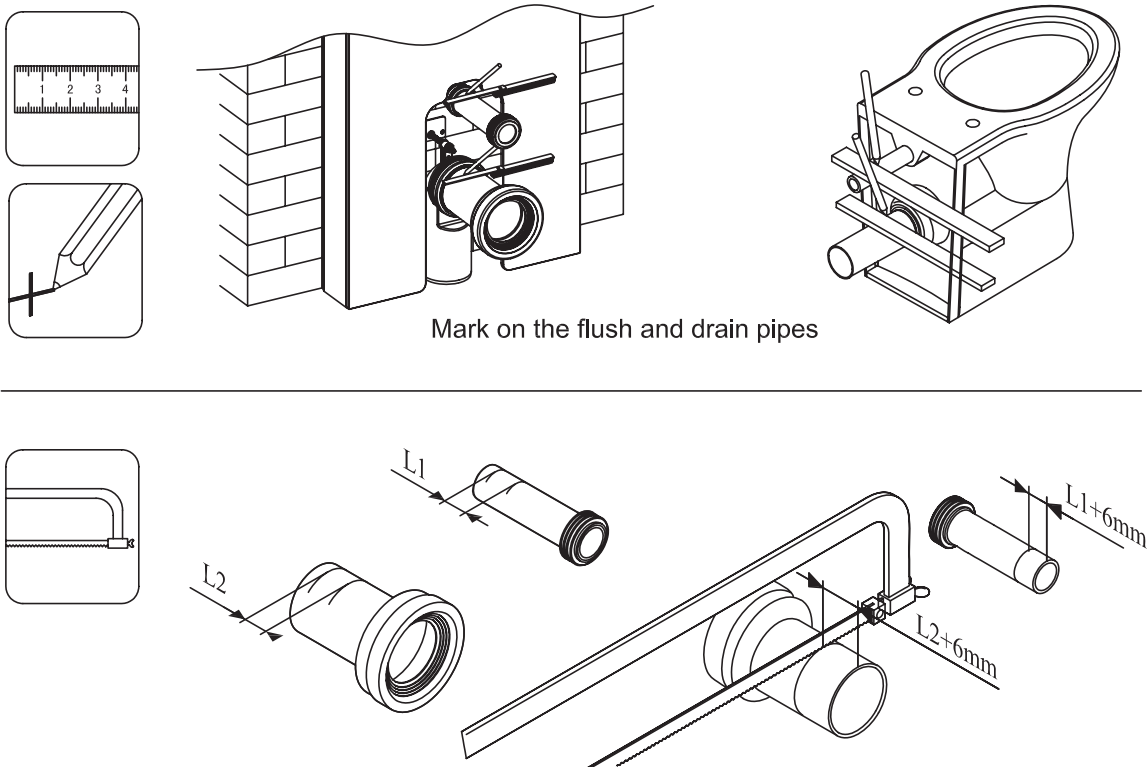


Mark: air hoses cannot be on the upper of the lever, which will interfere with lever's normal working.

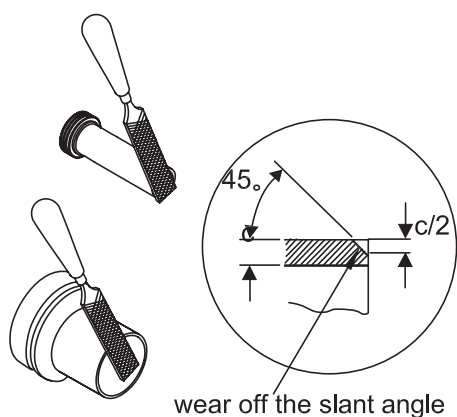
9. Install the top cover



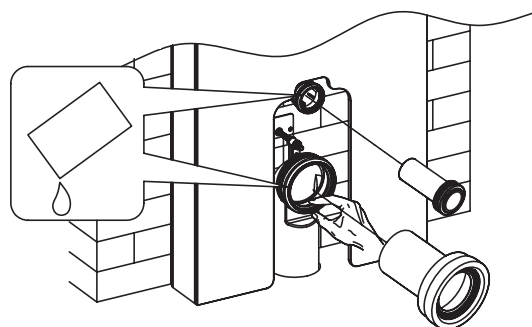
10. Toilet installation



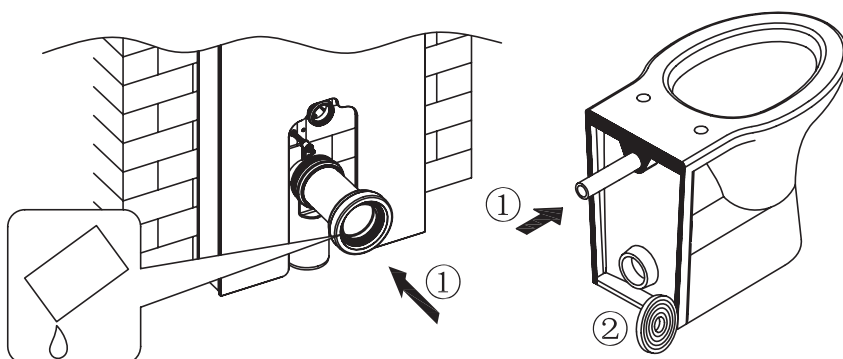
Cut the flushing pipes according to your needs.



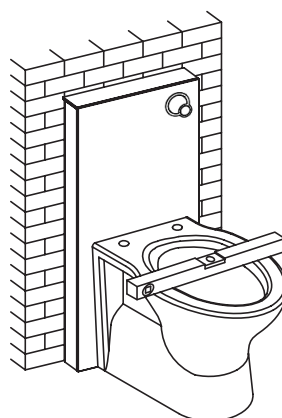
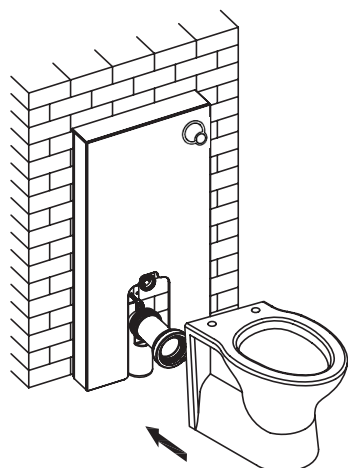
make slant angles on the flush pipes



Lubricate rubber seals with plumbers grease to prevent tearing

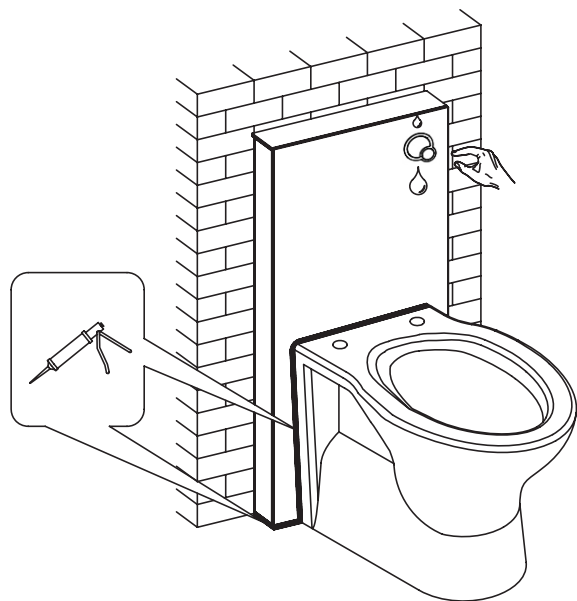


- ① Fix the small flush pipe on toilet and the bigger one with the cabinet cistern.
- ② Apply an adhesive tape for glass protection.

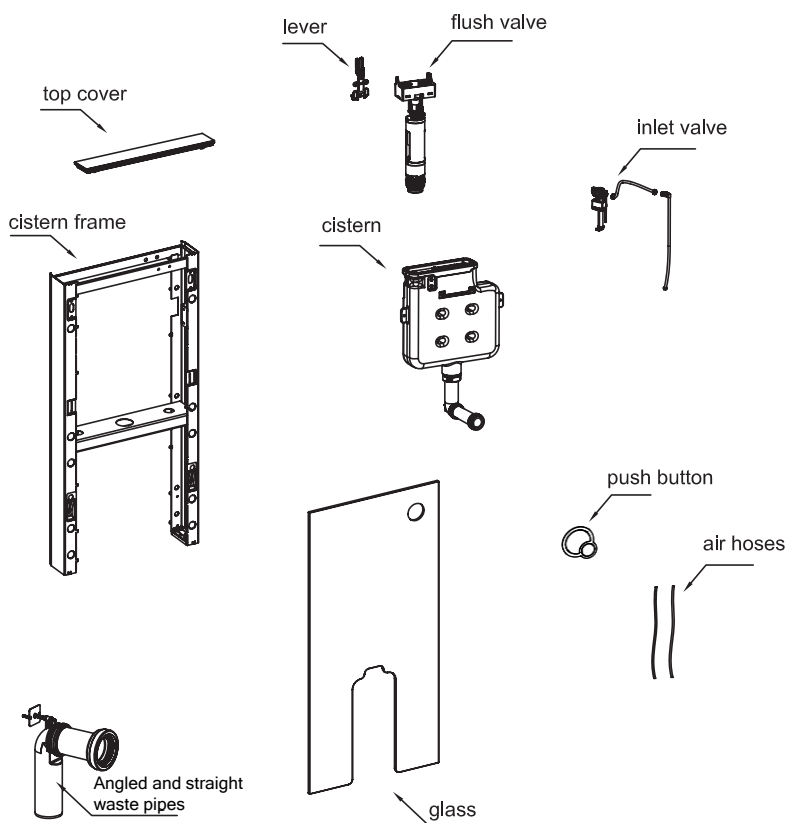


Fix the toilet to the cistern, and adjust it until it is in a proper position.

11. Test all parts in good working condition

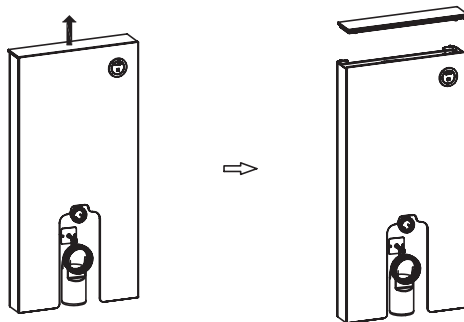


12. Main accessories

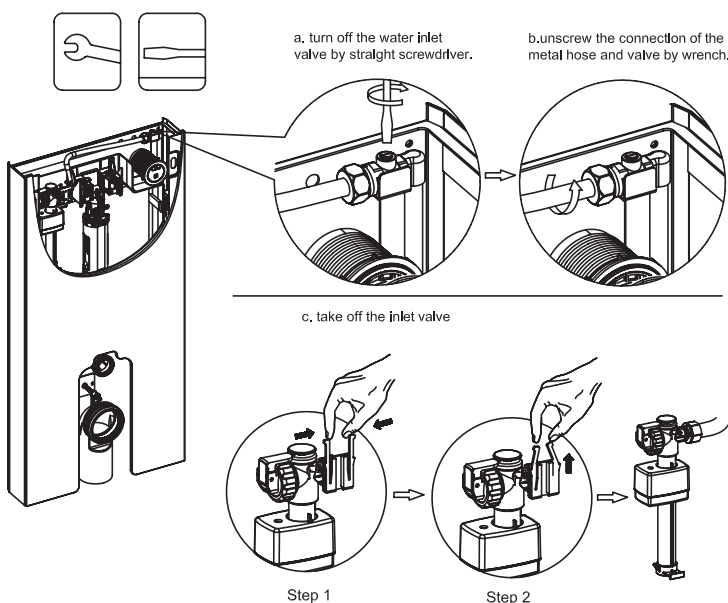


13. Cistern maintenance

1) remove the top cover upwards



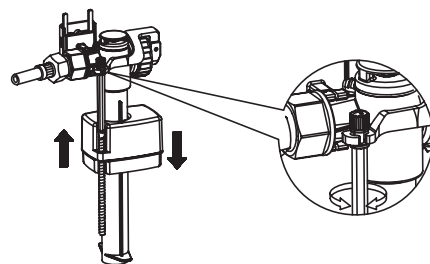
2) take off the inlet valve



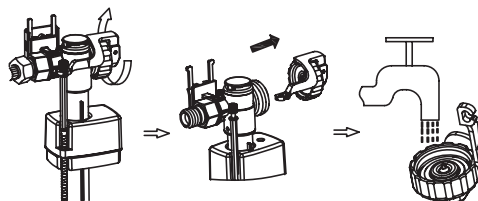
3) Inlet volume adjustment and maintenance

adjust water line:

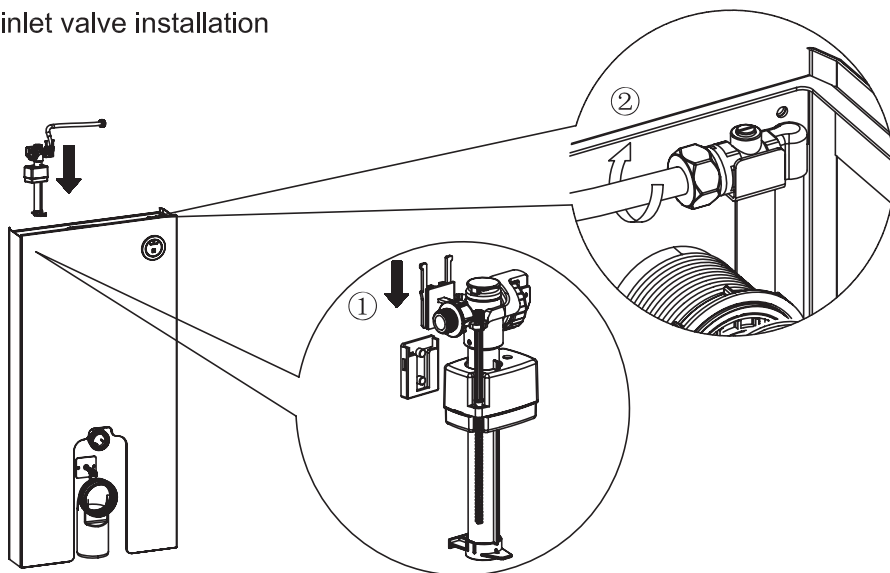
- adjust the float upwards to increase the inlet volume
- adjust the float downwards to reduce inlet volume



inlet valve maintenance: back cover can be removed to clean the washer if inlet valve cannot stop water or water inlet too slow;

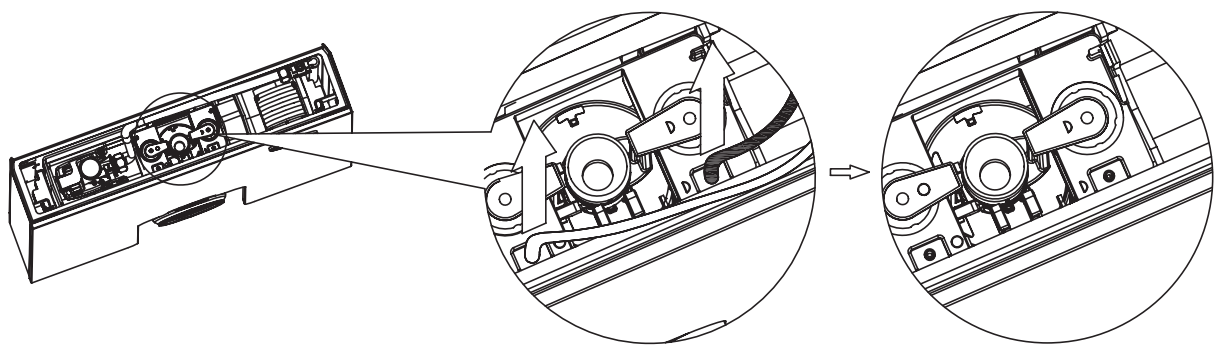


4) inlet valve installation

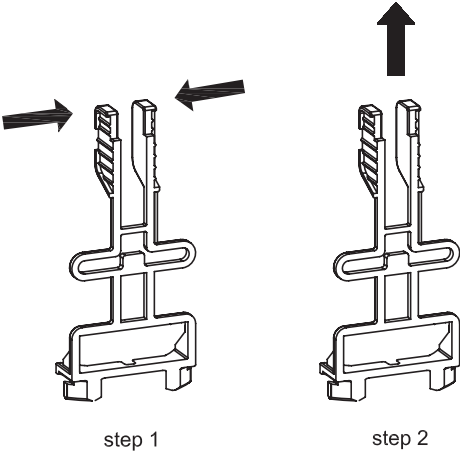
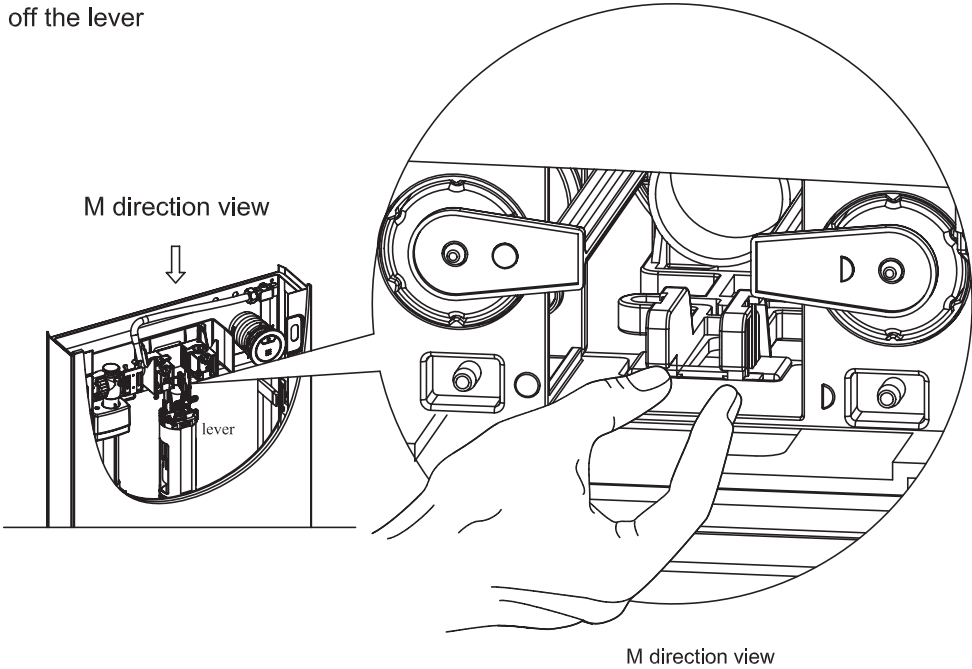


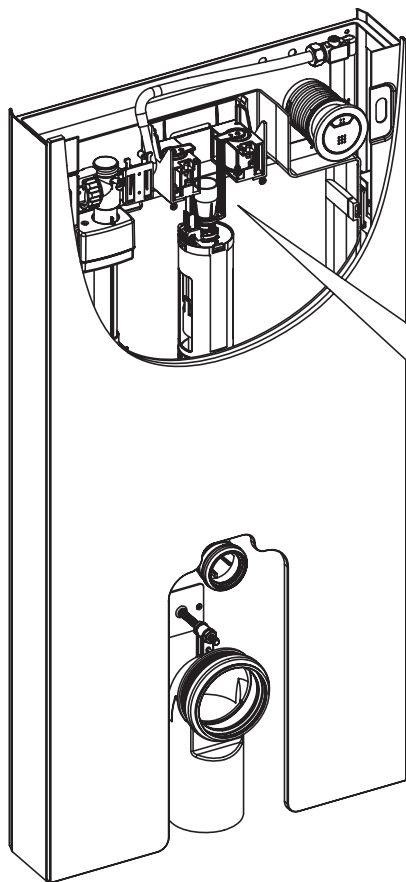
4) Flush volume adjustment and maintenance

a. remove the two air hoses on the flush valve

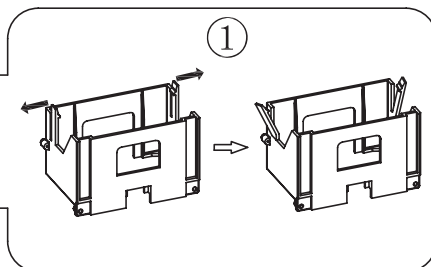
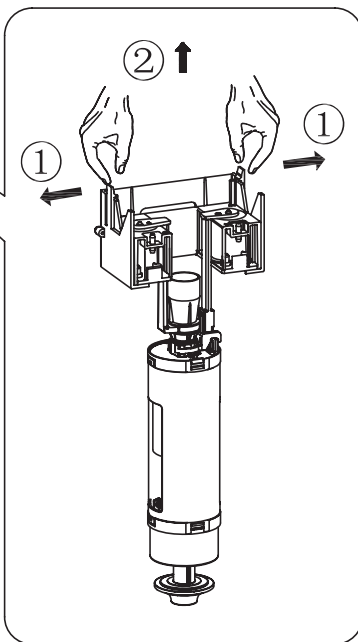


b. take off the lever

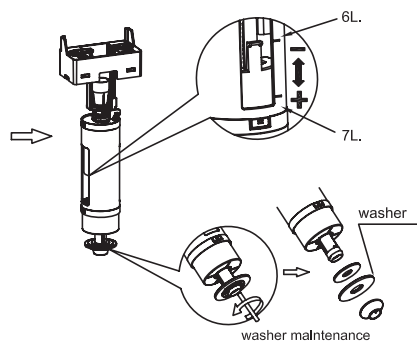




c. take off the flash valve:
open the buckles and take off
the pneumatic fittings

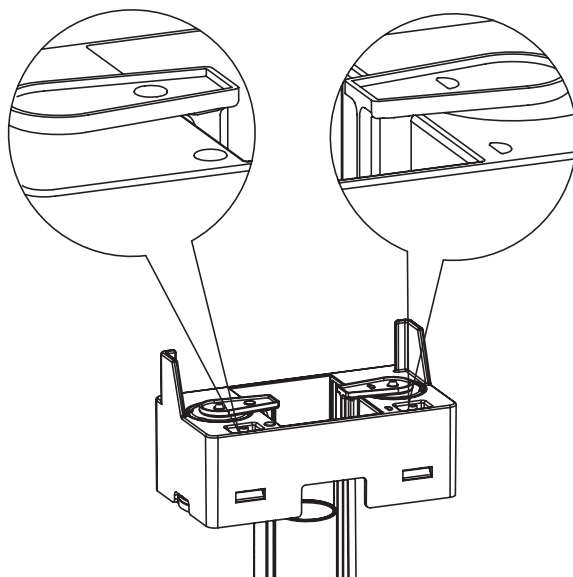


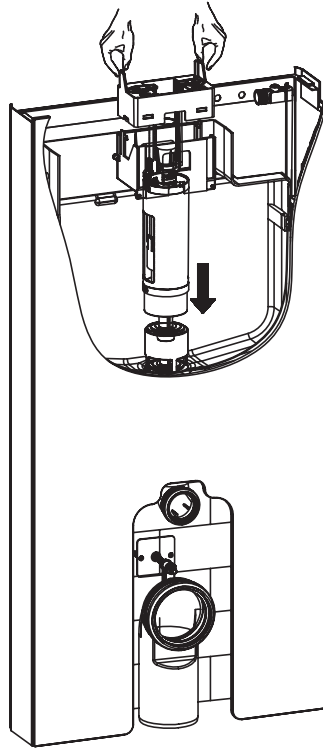
d. adjust flushing volume
by adjusting float position;



5) flush valve installation:

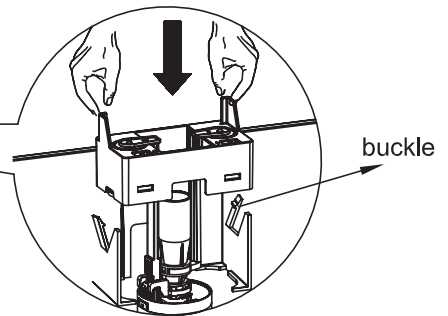
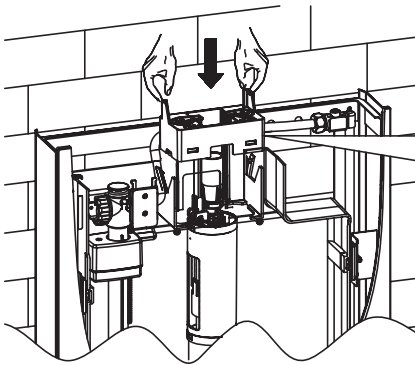
a. align the full and flush air hoses with correct marks:



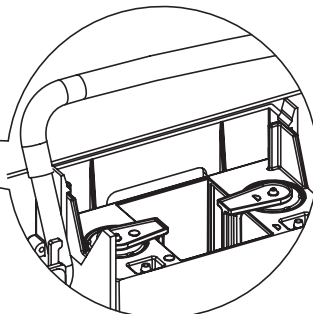
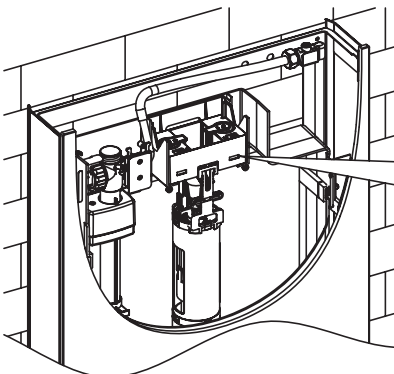


b. place the flush into the cistern,
making it align with flush valve base

c. press down the pneumatic fittings and
open the buckles of the cistern hanger;



d. press down the pneumatic fittings until it clicks in the right position.



e. Lever installation

